

# The New Model of Occupational Health Service "Workers' Health Center"

; The Synergy of public finance(KOSHA) & Private professionalism(YUHS)

\* KOSHA : Korea Occupational Safety & Health Agency  
\* YUHS : Yonsei University Health System

2012. 03. 22.

Jungho Hwang<sup>\*1,3</sup>, Inah Kim<sup>2,3</sup>, Jong uk Won<sup>1,2,3</sup>, Jaehoon Roh<sup>1,2,3</sup>, Jung sun Park<sup>4</sup>

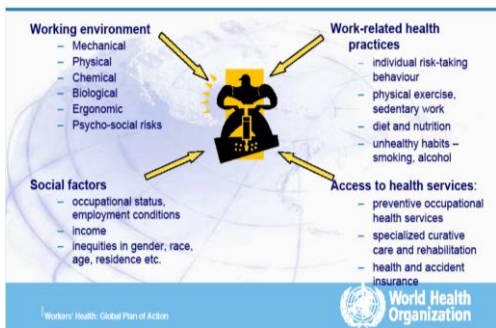
<sup>1</sup>Yonsei University College of Medicine Dept. of Preventive Medicine,  
<sup>2</sup>Graduate School of Public Health Yonsei University, <sup>3</sup>Workers' Health Center (Incheon),  
<sup>4</sup>Korea Occupational Safety & Health Agency, KOREA



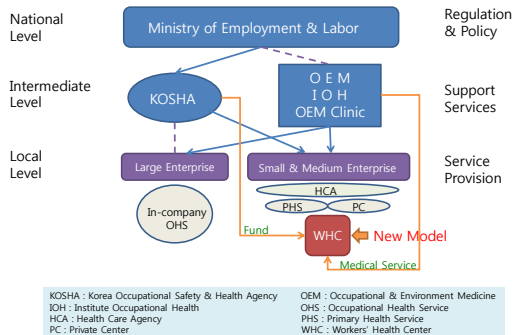
# Introduction



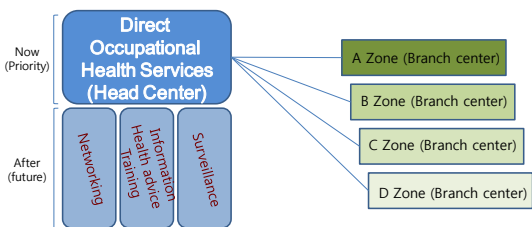
## What determines workers health?



## Occupational Health System (KOREA)



## The Model of WHC (Role)



## Workers' Health Center in KOREA



## Method & Result

### Business Case (Incheon Workers' Health Center)

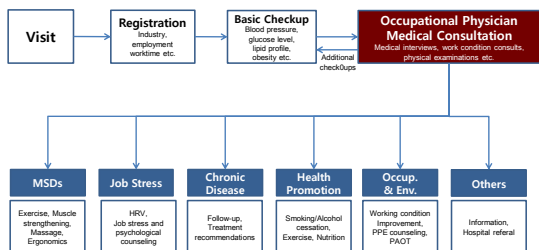


## Program

- 1. Medical counseling:** Common diseases, occupational diseases, and job suitability assessment services
- 2. Health promotion:** Cerebro-cardiovascular diseases, smoking cessation, exercise promotion programs
- 3. Psychological counseling service:** Job stress, MBTI (Myers briggs type indicator), depression, organizational psychology, and KOSS(Korean Occupational Stress Scoring).
- 4. Work environment counseling:** Personal protective equipment training, basic researches for hazards, PAOT (Participatory Action-Oriented Training).
- 5. Musculoskeletal disorders prevention:** Muscle relaxation, balance maintenance techniques, stretching techniques, physical therapy, and exercise therapy.



## Task Course



## Information

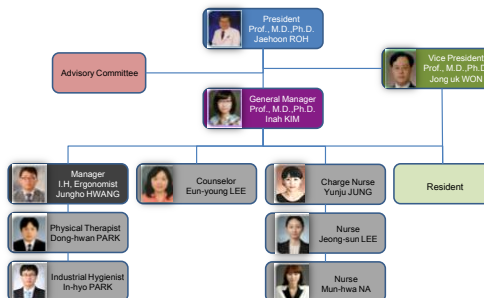
- Open date:** From April 1, 2011
- Location:** The Namdong National Industrial Complex in South-east area of Incheon
- Area:** 390 m<sup>2</sup>
- Sizes of industries in the Namdong National Industrial Complex:** 4,133 small companies, 64,572 workers.
- Staffs:** A total of 8 persons  
( 1 occupational medicine specialist, 3 nurses, 1 physical therapist, 1 psychologist, 1 industrial hygienist, 1 ergonomist)
- Operation hours:** 09:00 a.m.~ 9:00 p.m.



## Service Items of WHC\_incheon



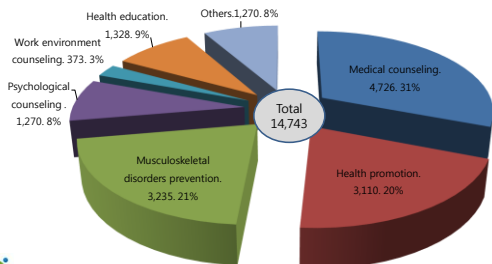
## Organization Chart



Administration Results(2011)



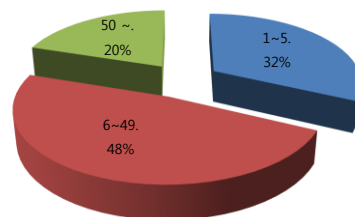
Service Item



Administration Results(2011)



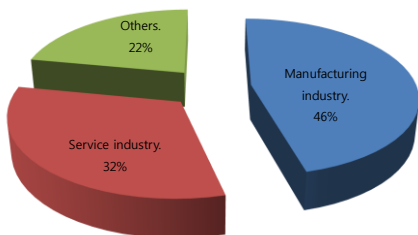
Enterprise Scale



Administration Results(2011)



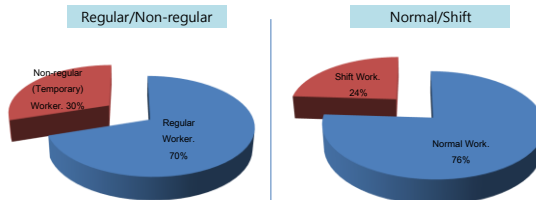
Type of Industry



Administration Results(2011)



Type of Occupation



Administration Results(2011)

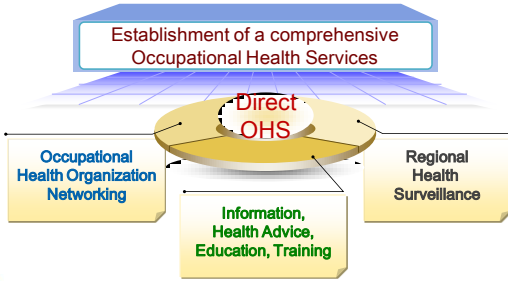


Strategy

- The Workers' Health Centre has been operated by the following 5 strategies for health care management of workers in small enterprises.
  - Shared by workers of small enterprises
  - Individualized care for each workers
  - Referral system to tertiary hospitals after initial medical evaluations if needed
  - Comfortable and confidential consultations on medical treatment options
  - Consultation for all workers' health management

Conclusion

## Future Directions



## VIDEO

INCHEON  
WORKERS' HEALTH CENTER



Thank you !!