

# Immunotoxicology of Silica: Silica activates regulatory T cell

Hayashi H<sup>1,2</sup>, Otsuki T<sup>1</sup>, Maeda M<sup>1,3</sup>, Kumagai N<sup>1</sup>, Matsuzaki H<sup>1</sup>, Lee S<sup>1</sup>, Masayasu Kusaka<sup>4</sup>, Koza Urakami<sup>5</sup>, Nishimura N<sup>1</sup>

<sup>1</sup>Department of Hygiene, <sup>2</sup>Department of dermatology, Kawasaki Medical School, Kurashiki, Japan, <sup>3</sup>Department of Biofunctional Chemistry, Division of Bioscience, Okayama University Graduate School of Natural Science and Technology, Okayama, Japan, <sup>4</sup>Kusaka Medical School, Kurashiki, Japan, <sup>5</sup>Hinase Urakami Clinic, Bizen, Japan

# Immunotoxicology of Silica:

Silica activates regulatory T cell

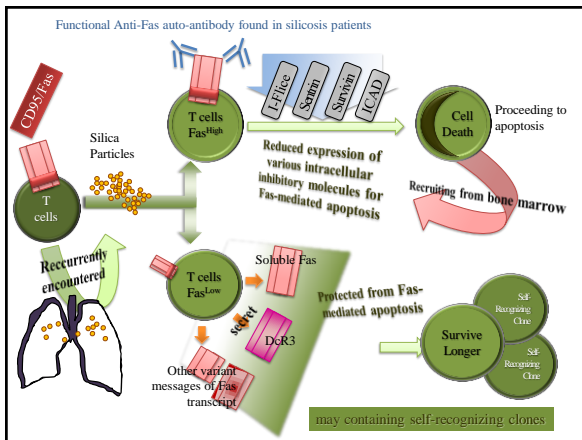
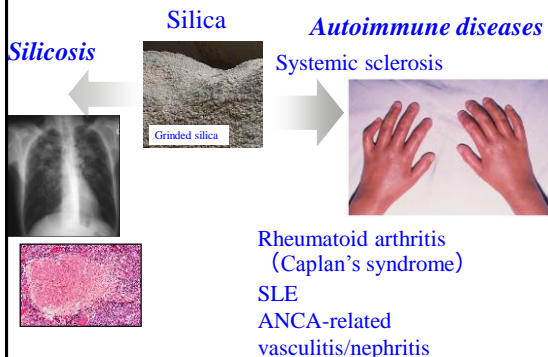


will presented in Free Paper Program, 16:00~17:30, March 19<sup>th</sup>, 2012 at Coata Maya 5 Allergy and Immunotoxicology SC

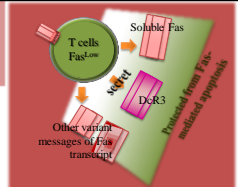
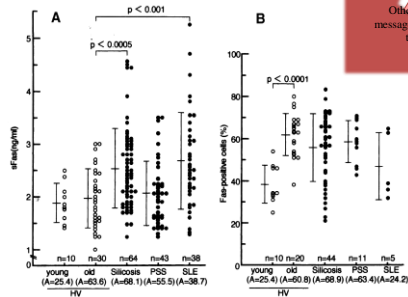
in this session

# Alteration of Fas and related molecules found in silicosis

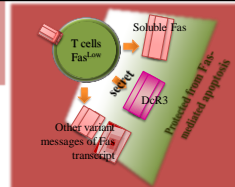
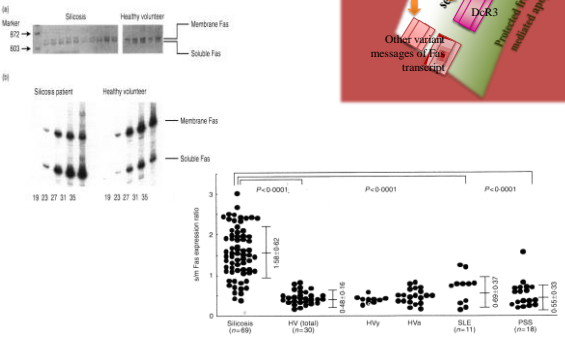
## Silica induces pulmonary fibrosis and also autoimmune diseases

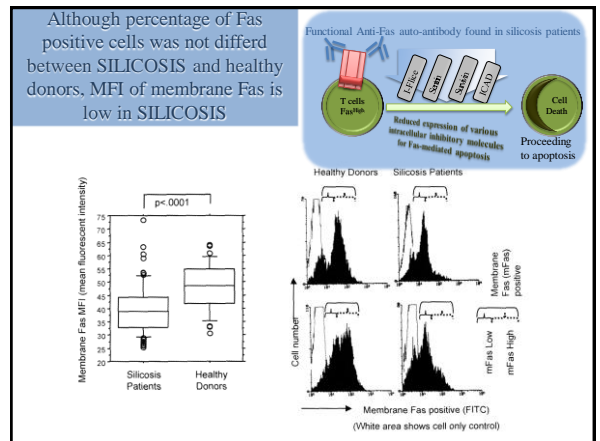
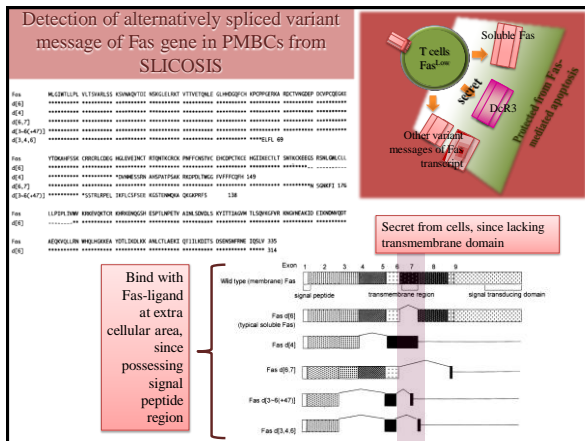
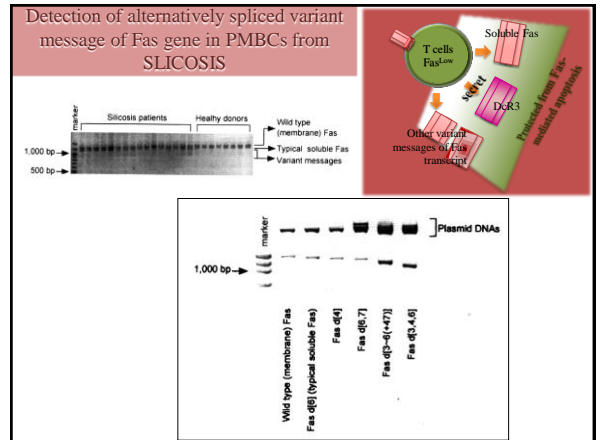
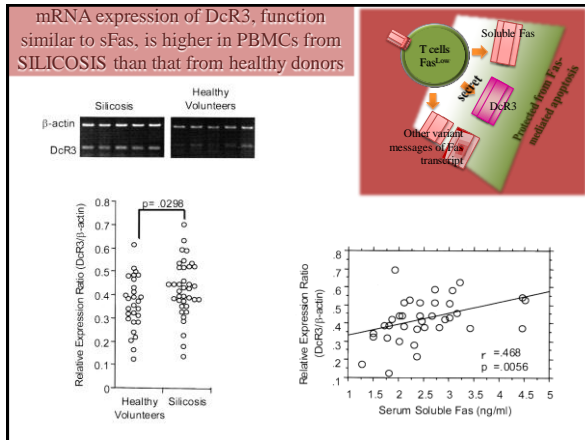
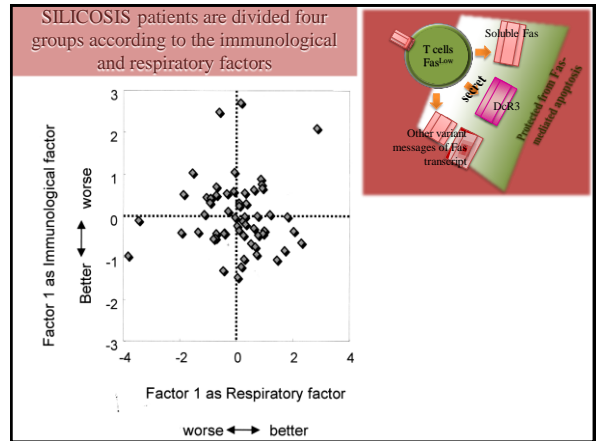
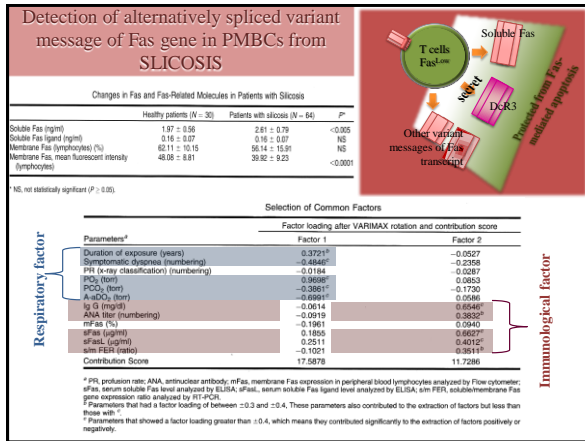


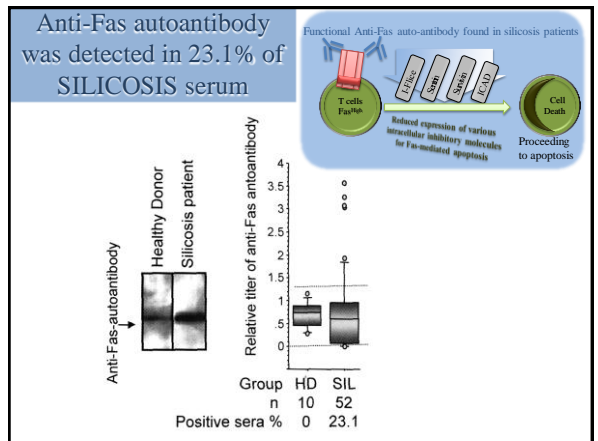
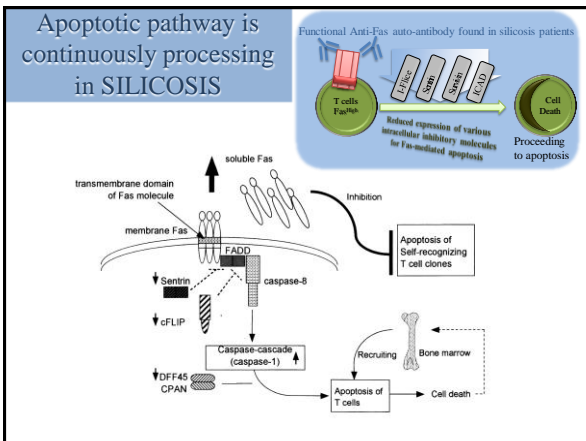
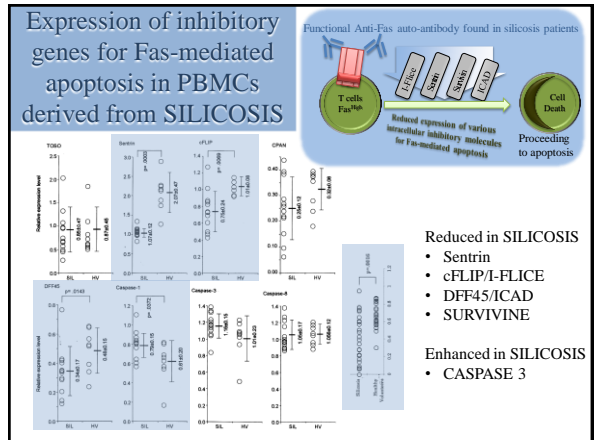
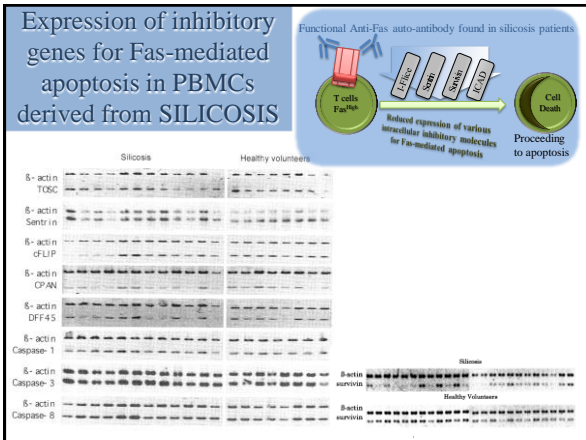
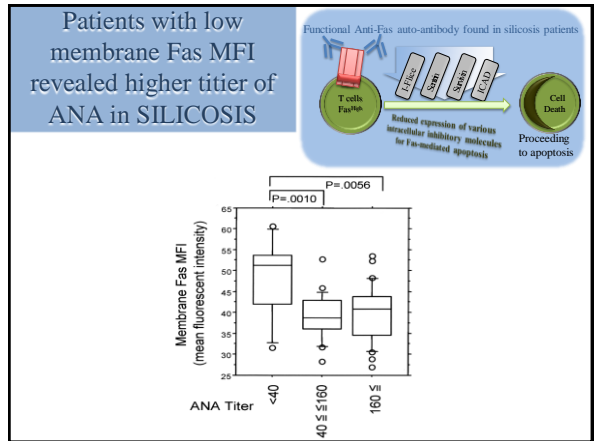
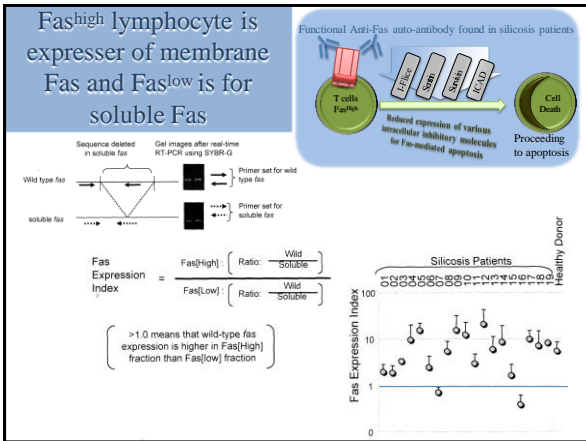
Serum soluble Fas is elevated in SILICOSIS as well as autoimmune disease such as SLE

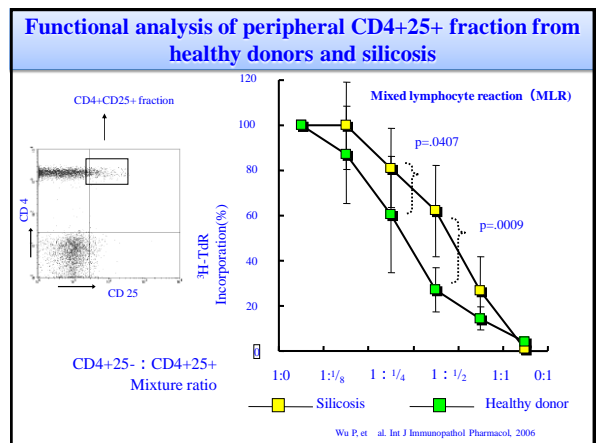
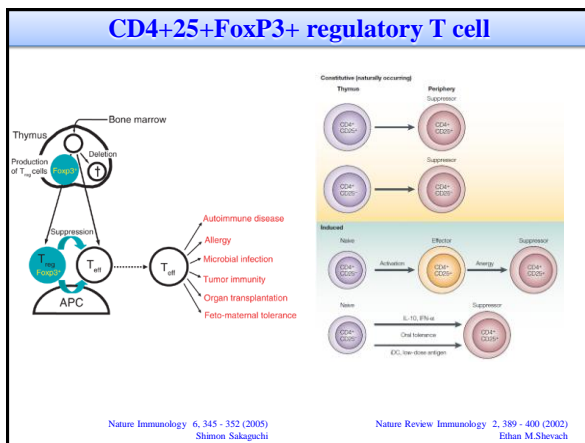
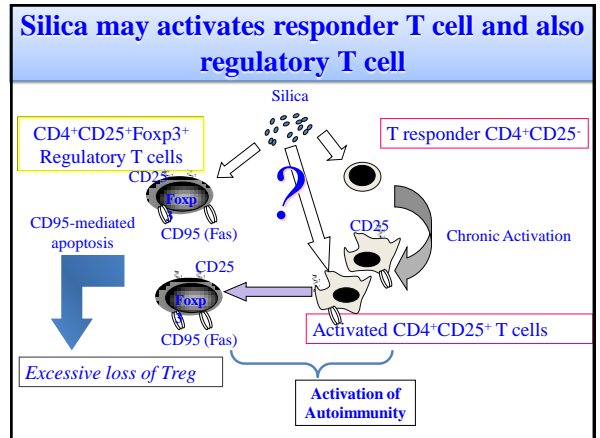
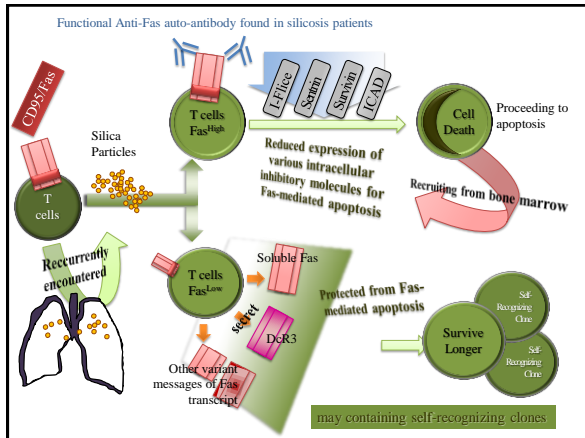
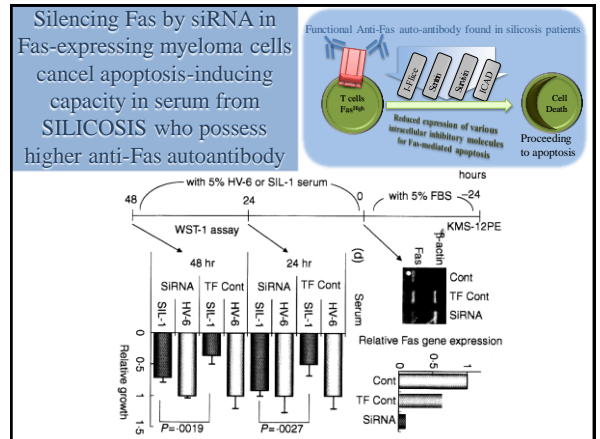
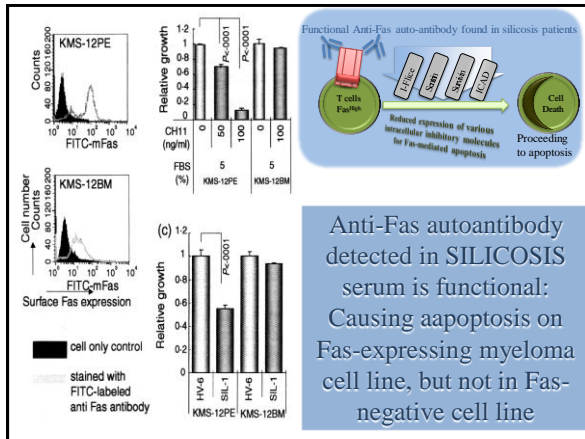


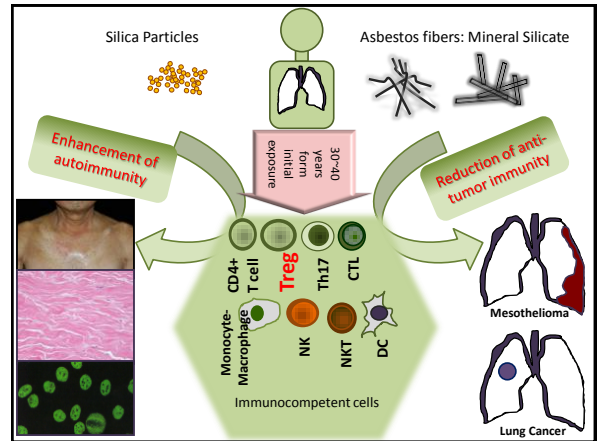
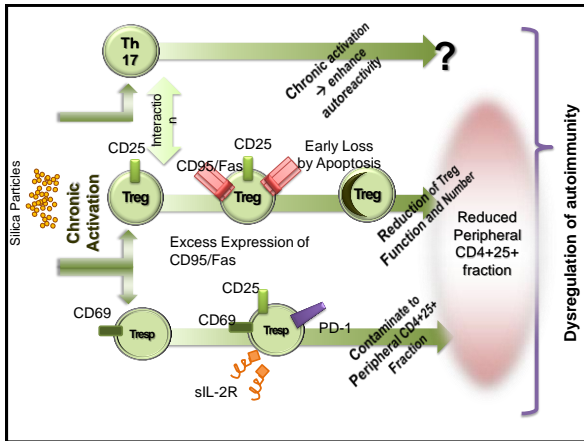
Soluble Fas mRNA is dominantly expressed in PMBC derived from SILICOSIS











### Acknowledgements

**Department of Hygiene**  
Kawasaki Medical School

**Present Staff**

- Prof. Yasumitsu Nishimura
- Dr. Naoko Kumagai-Takei
- Dr. Hidenori Matsuzaki
- Dr. Suni Lee
- Ms. Tamayo Hatayama
- Ms. Shoko Yamamoto

**Former Staff**

- Prof. Ayako Ueki
- Prof. Hidenori Hyodoh
- Dr. Megumi Maeda
- Dr. Hiroaki Hayashi
- Dr. Yoshie Miura
- Dr. Shuko Marakami
- Dr. akiko Takata-Tomokuni
- Dr. Ying Chen
- Dr. Ping Wu
- Ms. Naomi Miyahara
- Ms. Minako Katoh
- Ms. Haruko Sakaguchi



Konaka Hospital (Bizen, Okayama, Japan)  
Dr. Masayasu Konaka  
Hinase Urakami Clinic (Bizen, Okayama, Japan)  
Dr. Kozo Urakami

Department of Respiratory Surgery  
Okayama University School of Medicine  
Dr. Shinichi Toyooka  
Dr. Yuhio Maki

Okayama Rosai Hospital  
Dr. Takumi Kishimoto  
Dr. Rika Tabata  
Ms. Yoko Kojima

"Comprehensive approach on asbestos-related diseases" supported by the "Special Coordination funds for Promoting Science and Technology (H18-1-3-3-1)" 2006 to 2010 in Japan

Chief: Prof. Takemi Ozaki  
Associate Chief: Prof. Takashi Nakano; Respiratory Medicine, Department of Internal Medicine, Hyogo College of Medicine

Member Researchers

- Prof. Seiki Hasegawa; Department of Thoracic Surgery, Hyogo College of Medicine
- Prof. Morihito Okada; Department of Surgical Oncology, Research Institution for Radiation Biology and Medicine, Hiroshima University
- Prof. Tohru Tsubimura; Department of Pathology, Hyogo College of Medicine
- Dr. Yoshitaka Sekido; Division of Molecular Oncology, Aichi Cancer Center Research Institute
- Prof. Shinya Toyokuni; Department of Pathology and Biological Responses, Graduate School of Medicine, Nagoya University
- Dr. Hiroshi Nishimoto; Statistics and Cancer Informative Division, Research Center for Cancer Prevention and Screening, National Cancer Center
- Prof. Kazuya Fukuoka; Respiratory Medicine, Department of Internal Medicine, Hyogo College of Medicine
- Prof. Fumihito Tamaki; Department of Surgery (II), University of Occupational and Environmental Health