




OCCUPATIONAL HEALTH IN VIET NAM 2001 – 2010

Tran Anh Thanh MD. M.Med OM.
Division of Occupational Health and Injury
Prevention - The Health Environment
Management Agency,
Ministry of Health, SR Viet Nam

CONTENT

**Result of implementation OSH in period
2001 – 2010**

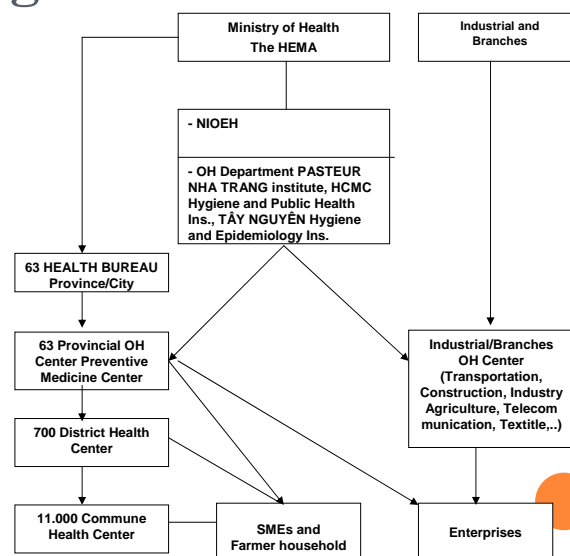
- ***Building OSH legislation***
 - ***Strengthening organization and management***
 - *1.2.1. Organization and manpower.*
 - *1.2.2. Equipment and facility.*
 - *1.2.3. Management of grassroot health station.*
 - ***Training on OSH***
 - ***Management of working environment***
 - ***Management of worker health***
 - ***Occupational diseases***
 - ***Comment and recommendation***
- 

Building OSH legislation

- **Labour Code: Approved since 1994**
- **Develop Decree**
 - Decree 06/ND-CP and 195/2001/ND-CP.
 - National Program on OSH 2006 – 2010 (Occupational diseases prevention: 1.5 M USD).
 - Established the Health Environment Management Agency, MoH at Decree 188/2008/ND-CP and 22/2010/ND-CP).
- **And Circular**
 - Promulgate Decision and Circular: 09/2000/TT-BYT, 12/2006/TT-BYT, 13/2007/TT-BYT, Decision 3733/2002/QĐ-BYT (OH standards), 27/2006/QĐ-BYT (supplement 04 new occupational diseases with total of 28 Ods)
 - Building and collaborating promulgate inter circular on regulation of woman job, child and teenager work,...

Strengthening organization and management

Organization and manpower



Strengthening organization and management (2)

Organization and manpower

No	Content	Local	Branch	2010
1	Total OH staff	305	265	570
2	Include: MD	129	145	274
	Pharmacist	11	7	18
	University degree	58	37	95
	Nursing, college	106	76	182
3	Ods' expert	29	16	45
4	Occupational health Dept.	50	8	58
5	Ods Clinic	34	3	37

8 provincial OH Center: **Vĩnh Phúc, Bắc Ninh, Hà Nội, Bình Dương, Đồng Nai, Thành phố Hồ Chí Minh, Cần Thơ và Kiên Giang**

Strengthening organization and management (3)

Health station at enterprises

No	Enterprise categorize	No of Ent.	No. of employees
1	Small < 50 workers	15.752	360.182
2	Medium (51 – 200 workers)	3.742	426.837
3	Large (> 200 workers)	5.352	2.132.499
	Total	24.846	2.919.518

No	Enterprise categorize	Health station organization			
		Health staff	Health station	Without health staff	Percentage %
1	Small < 50 workers	73	25	15.679	99,5%
2	Medium (51 – 200 workers)	651	154	2.937	78,5%
3	Large (> 200 workers)	2.226	2.485	641	14,4%
	Total	2.950	2.664	19.257	
	Percentage %	11,9%	10,7%	77,5%	
	<i>Compare with 2005</i>	<i>8,7%</i>	<i>4,1%</i>	<i>87,2%</i>	

Training on Occupational Health and Safety

No	Year	Total of training course	No of enterprise	No of trainee
1	2006	2068	4633	124.865
2	2007	2499	7667	161.354
3	2008	2208	6723	175.241
4	2009	3411	12066	941.138
5	2010	4510	18260	1.235.320
	Total	14.696	49.349	2.637.918
	Total 2001 – 2005	4.570	23.952	355.974

Management of working environment

No	Samples categorize	2001 – 2005		2006 – 2010	
		Total sample	%>TLV	Total sample	%>TLV
1	Microclimate	408.509	17,3%	645.117	14.16%
2	Dust	87.281	22,3%	135.938	11.13%
3	Noise	126.665	30,8%	168.229	22.16%
4	Light	138.971	21,4%	207.876	15.28%
5	Toxic gases	76.455	9,9%	106.749	6.99%
6	Radiation	14.007	11,9%	14.791	20.00%
7	Vibration	10.257	27,9%	35.933	5.50%
8	Others	15.916	14,3%	8.722	8.52%
	Total	878.061	19,6%	1.323.355	14.26%

Management of worker health

Management of worker's health

No	Period	Total	Cat. 1	Cat. 2	Cat. 3	Cat. 3	Cat. 4
1	2001 – 2005	3.273.868	604.309	1.508.481	905.988	214.576	40.514
		Percent %	18.46	46.08	27.67	6.55	1.24
2	2006 – 2010	5.703.472	2.068.108	1.850.572	1.282.704	391.225	105.716
		Percent %	21.85%	22.25%	15.20%	4.39%	1.40%

Leave days ill sickness

No	Periof	General percentage	Per worker
	Period 2006 – 2010	14,5%	1,36
	Period 2001–2005	17,34%	1,06
	Period 1998–2000	16,51%	0,97

Management of worker health

Diseases pattern in worker

No	Diseases	2001–2005	2006	2007	2008	2009	2010
1	Respiratory	27,1%	30.5%	31,57%	29.3%	27.7%	28.7%
2	Eyes	6,4%	6.6%	5,99%	7.81%	7.9%	7.2%
3	Muscoskeletal	4,7%	5.7%	5,06%	6.67%	6.35%	6.5%
4	Hearing	4,2%	4.6%	2,14%	2.97%	3.0%	2.8%
5	Skin	2,4%	2.3%	2,35%	2.16%	2.6%	2.4%
6	Gyneacology	5,6%	4,5%	5,5%			
7	Heart diseases	2,9%	2.9%	2,99%	3.34%	3.6%	3.5%
8	Malaria	0,68%	0,26%	0,58%			
9	Tuberculosis	0,23%	0.3%	0,08%	0.11%	0.1%	0.1%
10	Cancer	0,039	0.024%	0,04%	0.43%	0.04%	0.03%
11	Others	45,8%	46.9%	46,7%	47.21%	48.71%	48.7%

Occupational diseases

Occupational diseases up to 2010

No	Occupational Diseases	2001– 2005	2006– 2010	Cumulative	
				No cases	Percent %
	Silicosis	4729	2494	20.229	75,1%
	Asbestosis	1		3	
	Bysinosis	139		278	1,0%
	Occupational bronchitis	35	23	102	0,3%
	Lead and compounds poisoning	151	15	0	1,2%
	Benzene poisoning			321	
	Mercury and compounds poisoning	14		2	
	TNT poisoning	94	264	14	1,5%
	Nicotine poisoning	184		391	1,0%
	Pesticide poisoning	78	6	259	1,1%
	Radiation and X-ray diseases	5	1	297	
	Hearing loss	1739	589	9	15,4%
	Vivration disease	15		4202	
	Skin diseases	352	18	20	2,3%
	Contact dermatitis	1	41	629	0,018%
	Tuberculosis	6	7	53	0,3%
	Hepatitis	61	2	113	0,4%
	Leptospirosis	1		6	
	Total	7.605	3460	26.928	100%

Comment and recommendation

- The pollution of working environment are still at high level.
- The situation of worked - related diseases and occupational diseases: silicosis, deafness, chemical poisoning have been detected and increased yearly.
- The intervention measures in recent years have contributed to preventing working environment, raise of awareness at all levels, workers and promote working health services.
- It is essential to implement National Program on OSH - occupational disease prevention in recent period.