



# EMERGING DISEASES IN MEXICO

DR. RAFAEL RODRÍGUEZ CABRERA

Coordinator of Occupational Health (IMSS)

Vice-President CAPRT

*30<sup>th</sup> International Congress on Occupational Health*



## Practical approaches of the subject

- Diagnosis and treatment of diseases
- Importance regarding labor-affectation in terms of money-loss and days with incapacity
- Capacity of registering emerging work diseases



## Practical approaches of the subject

- Early diagnosis and treatment of diseases
- The issue is important in terms of health assistance, more than in terms of labor protection



## Practical approaches of the subject

- Importance regarding labor-affectation in terms of money-loss and days with incapacity
- Capacity of registering emerging work diseases



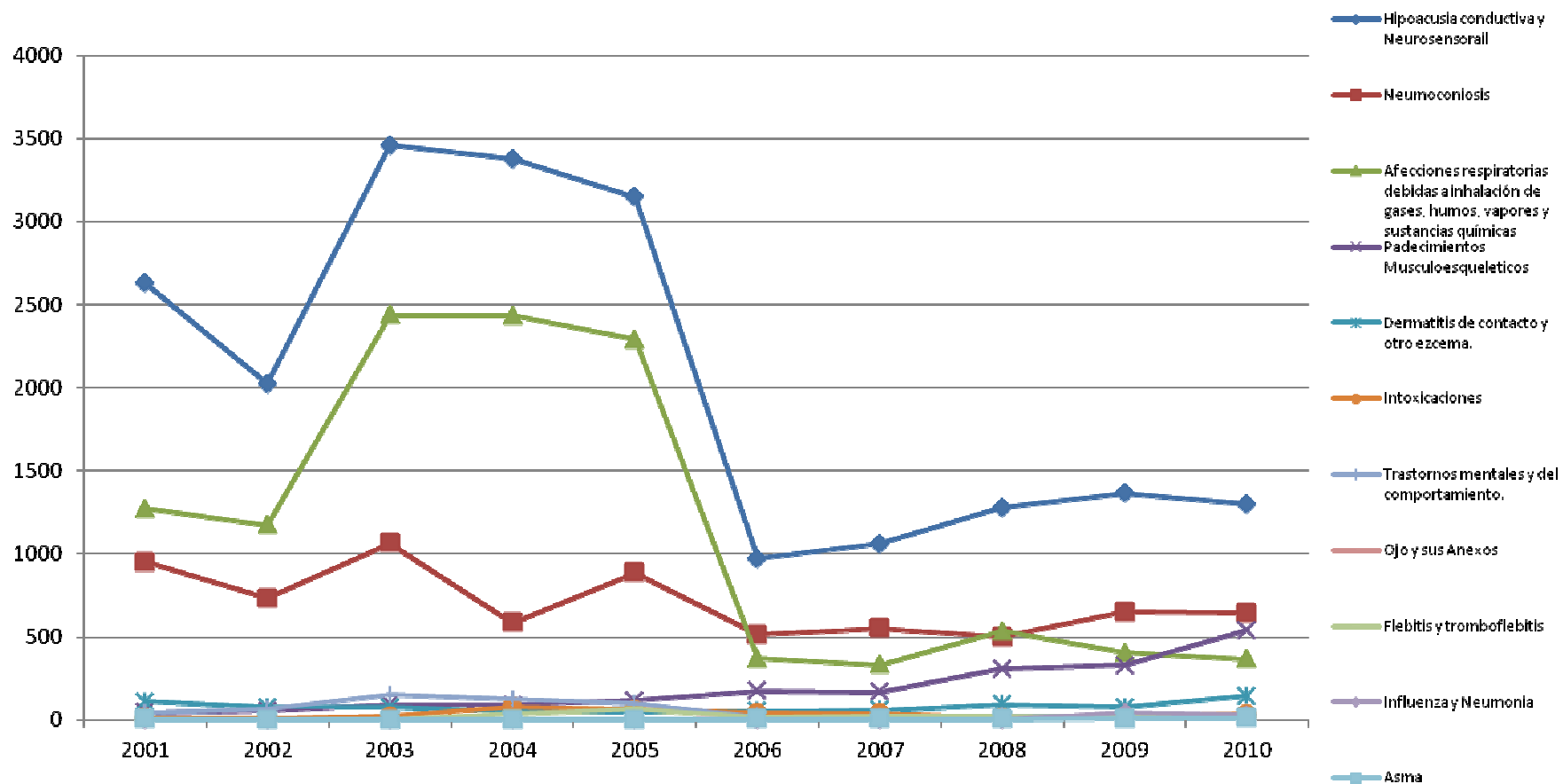
## LABOR AND ECONOMIC IMPACT:

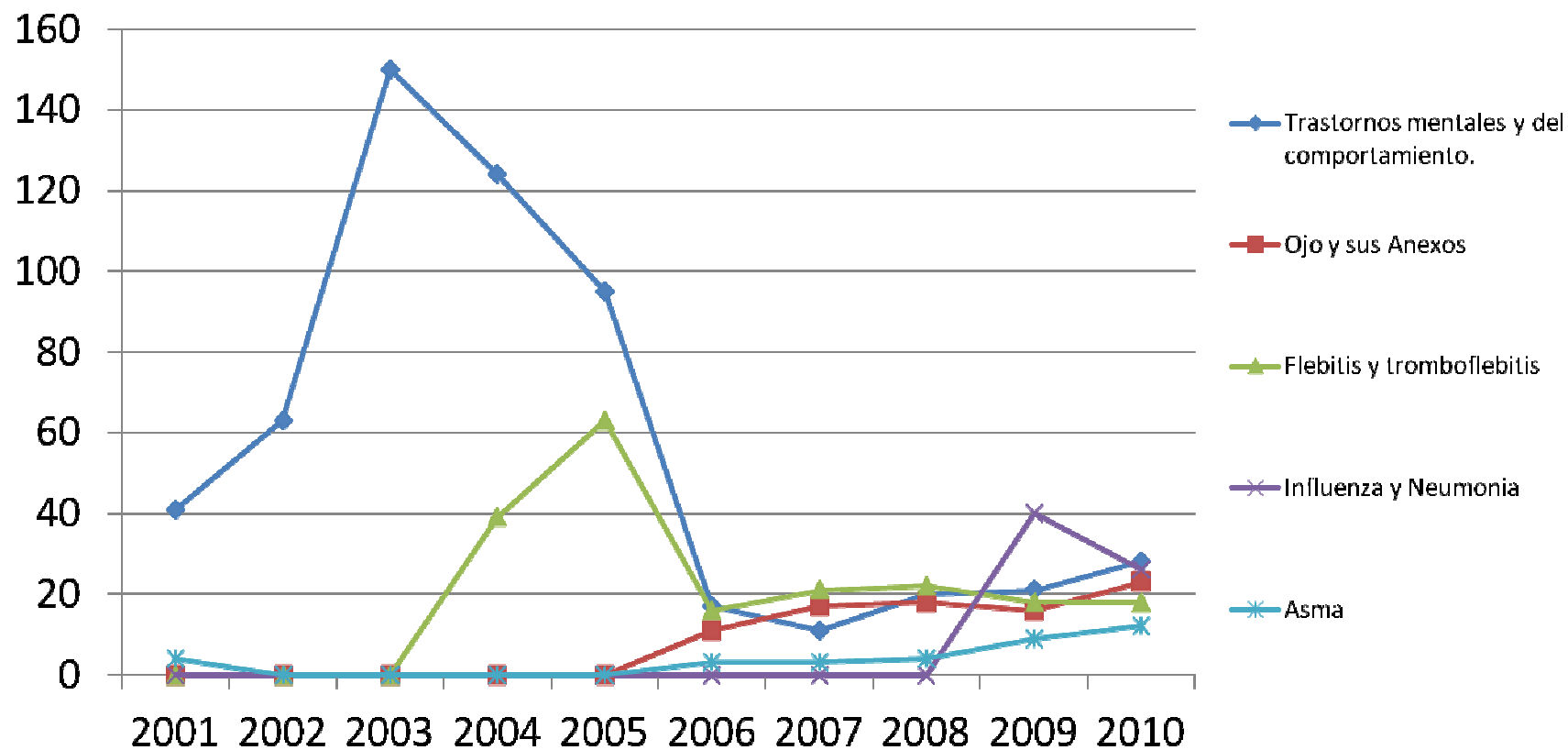
YEAR	COMPANIES	WORKERS (MILLION)	TOTAL RISK	DISABILITY DAYS (MILLION OF DAYS)	EXPENDITURE (MILLION OF PESOS)
2007	823,999	14.42	450,102	11.2	1,876
2008	833,072	14.26	506,934	11.9	2,108
2009	825,755	13.81	489,787	11.9	2,212
2010	829,500	14.34	506,528	12.9	2,412

**Source:** Memoria Estadística. Instituto Mexicano del Seguro Social.



## Principal Diagnosis: (2001-2010)







## Under-report of labor-risks

- In Mexico it is estimated that between 15 and 20% of Labor Accidents, and about 95% of Work Diseases, are not registered
- This is a huge area of opportunity to better understand emerging diseases





## Work-related deaths in the world

- According to the ILO, the economically active population in the world in 2000 was about 2.700 million
- Also, the number of work-related deaths is estimated in 1.9 -2.3 million

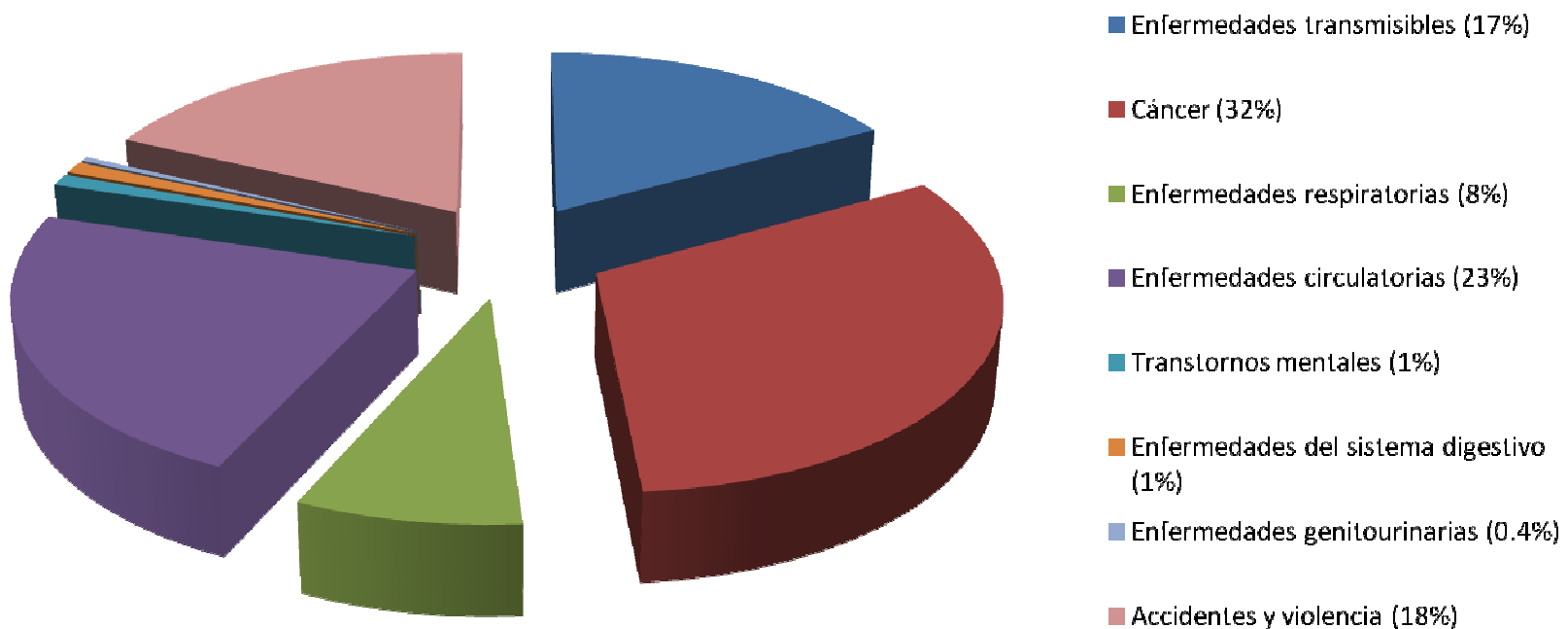


---

Deaths, labor accidents	355,000
Deaths by occupational diseases	1,574,000
Cancer	610,000
Circulatory diseases	449,000
Transmissible diseases	320,000
Chronic respiratory diseases	145,000
Neurological diseases	20,000



- Work-related deaths in the world





- 
- Cancer related to work in Mexico
  - Studies on cancer related to work in Mexico are practically inexistent
  - According to a study by the Mexican Social Security Institute (IMSS) in 2009, it was estimated that occupational exposure to carcinogens (excluding asbestos) in insured population, can produce more than 500 deaths due to cancer related to work



- It was found that bladder cancer, lung cancer, and leukemia are the neoplasms that are commonly attributed to carcinogens among the Mexican working population:

	MEN		WOMEN		TOTAL	
	Attributable Proportion	Number of deaths	Attributable Proportion	Number of deaths	Attributable Proportion	Number of deaths
Leukemia	22.0	86	16.0	29	20.0	115
Lung Cancer	42.7	362	12.0	12	38.5	374
Bladder Cancer	38.6	59	12.6	2	36.0	61
Skin Cancer	11.5	7	3.8	1	10.0	8
Nose Cancer and s. paranasal	18.3	2	5.0	1	15.0	4



---

**S**TRESS

TOBACC**O**

ALCOHO**L** & DRUGS

HI**V**/AIDS

VIOLENC**E**



---

## Retirement age

- Actuarial basis
- Demographic basis
- Economic and financial basis
- Biometric basis



---

## Retirement age

- Mortality
- Permanent Invalidity
- Disability
- Occupation and economic activity
- Years of life after retirement
- Conditions and working environment, health of workers





## Retirement age

- The estimated life expectancy at birth is a concept that catalyzes the different aspects to take into account and might serve as reference for a Dynamic Retirement Age, reviewed every 5 years



## PROPOSALS

- 1) Strengthen actions to prevent work related risks by employers and employees, following the guidelines by ILO and the experience in each country
- 2) Promote an international agenda to make comparable regulations on the registration of work related risks



## PROPOSALS

- 2) Reinforce training for the recognition of emerging work-risks
  
- 3) Promote compatibility among both, interinstitutional and international registration systems



## PROPOSALS

- 4) Analyze the benefits and weaknesses of a dynamic retirement age, that depends on medical advances and the derived increase in life expectancy at birth